



Classic Vehicle New Registration - Cross-Functional Flowchart

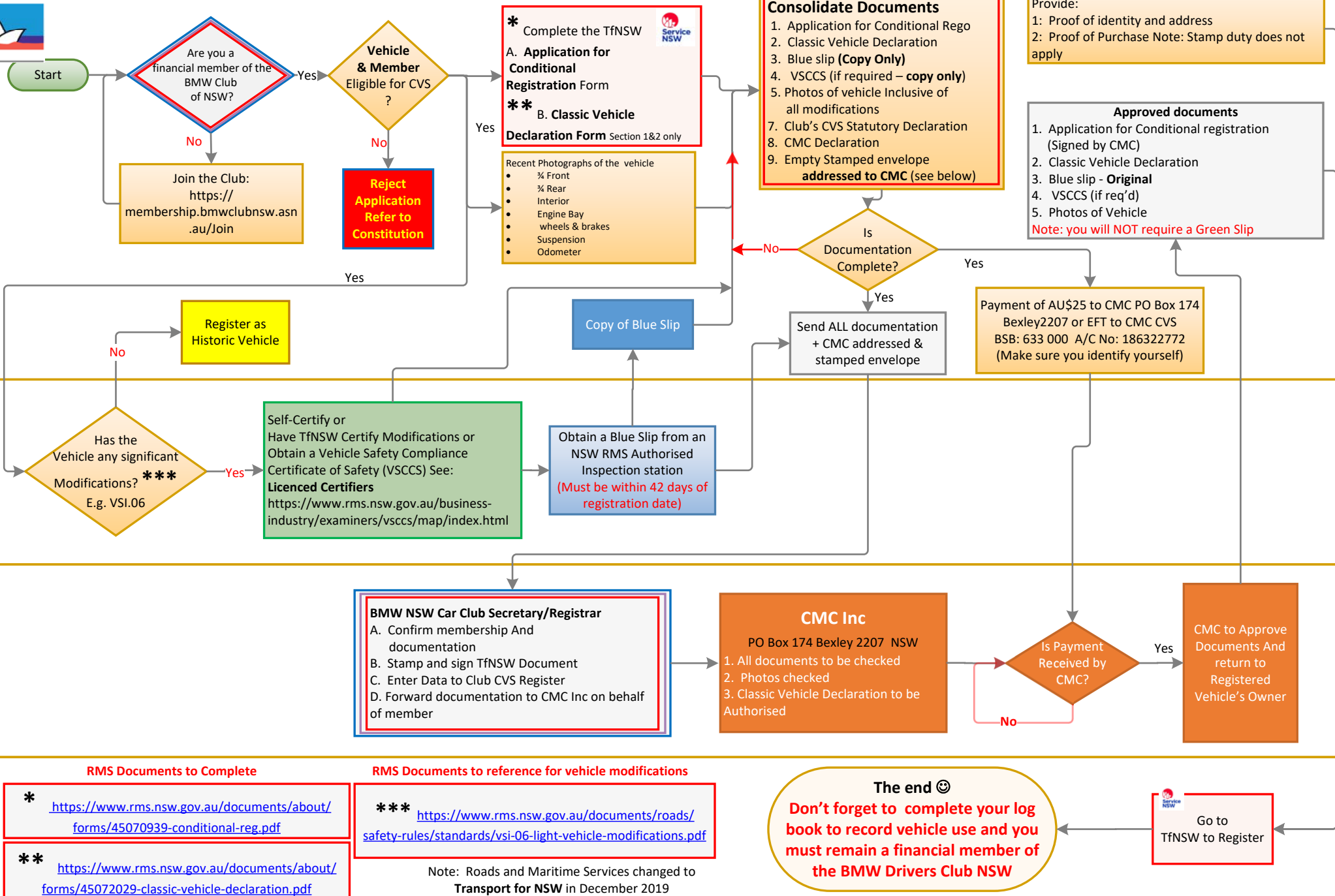


Classic Car Owner

Inspections

Affiliate CMC
and BMW Club NSW

NSW Transport
for NSW



RMS Documents to Complete

- * <https://www.rms.nsw.gov.au/documents/about/forms/45070939-conditional-reg.pdf>
- ** <https://www.rms.nsw.gov.au/documents/about/forms/45072029-classic-vehicle-declaration.pdf>

RMS Documents to reference for vehicle modifications

- *** <https://www.rms.nsw.gov.au/documents/roads/safety-rules/standards/vsi-06-light-vehicle-modifications.pdf>
- Note: Roads and Maritime Services changed to Transport for NSW in December 2019

The end ☺
 Don't forget to complete your log book to record vehicle use and you must remain a financial member of the BMW Drivers Club NSW

Go to TfNSW to Register